

SWC200 MOTORCYCLE WHEEL CHOCK AND STAND

OWNER'S MANUAL



FOR YOUR SAFETY
PLEASE READ THESE INSTRUCTIONS CAREFULLY
AND RETAIN THEM FOR FUTURE USE.



SPECIFICATION

MODEL No	SWC200
Max. Load capacity	815 kg
Suitable wheel sizes (Diameter)	15"-22" (380-558mm)
Suitable wheel width	3"- 5" (76-127mm)
Wheel cradle	Adjustable to 6 positions

WARNINGS



Read and understand instructions before use.



Always wear eye/face and hand protection.



Use the correct product for your application. Make sure your motorcycle's wheel fits in the Motorcycle Stand. Do not modify this product or use it for a purpose for which it is not intended.



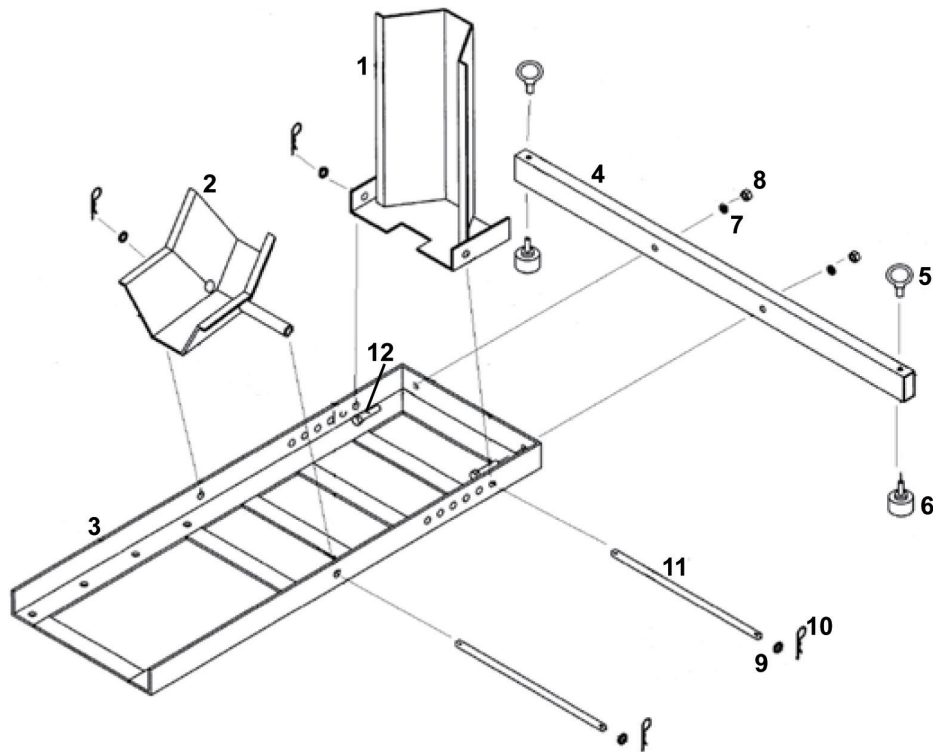
As with all machinery, there are certain hazards involved with its operation and use. Exercising caution will reduce the risk of personal injury.

WARNINGS


1. Do not exceed maximum load for this product (1,800 pounds). Loading a heavier motorcycle on the Stand can result in dangerous conditions to both the operator and the item loaded.
2. Always mount the Motorcycle Stand securely on level, dry surfaces that are capable of bearing the combined weight of the Stand and motorcycle.
3. Do not ride a motorcycle onto the Stand.
4. Never sit on the motorcycle while it is loaded on the stand. Never lie down under a motorcycle parked on the stand.
5. Do not use for aircraft purposes.
6. The warnings, precautions, and instructions discussed in this instruction manual cannot cover all possible conditions and situations that may occur. It must be understood by the operator that common sense and caution are factors which cannot be built into this product, but must be supplied by the operator.
7. Have product serviced by a qualified repair person using only identical replacement parts. This will ensure that the safety of the product is maintained.
8. Maintain labels and nameplates on the product. These carry important safety information. If unreadable or missing, contact SGS for a replacement.
9. Because when using the motorcycle stand, the tires are still loaded by the weight of the motorcycle, the motorcycle stand is not for storing motorcycles in winter.

PARTS LIST AND DIAGRAM

No	Part	Qty	Part No	No	Part	Qty	Part No
1	Wheel Cradle	1	907297	7	Washer, size 10	2	907303
2	Wheel Bracket	1	907298	8	Nut, M10	2	907304
3	Stand Base	1	907299	9	Washer, size 12	4	907305
4	Front Support	1	907300	10	R-Pin	4	907306
5	Eyelet	2	907301	11	Rod	2	907307
6	Leg Plug	2	907302	12	Bolt M10 x 45	2	907308




ASSEMBLY INSTRUCTIONS

 **Note: For an easier process, locate all connective elements along with the components prior to starting assembly.**

Step 1: Assemble the front support (4) to the front, closed end of the Stand Base (3), using Bolts (12), Washers (7) and Nuts (8). If not already assembled, thread the Eyelets (5) and the Leg Plugs (6) into the Front Support.

Step 2: See Parts Diagram for positioning of the Wheel Bracket (2). Join this with the Stand Base using the Rod (11) secured with Washers (9) and R-Pins (10).

 **Note: The wheel cradle (1) can be moved forward or backwards depending on the motorcycles' front wheel.**


Step 3: Measure the motorcycle front wheel and see how it fits between the Wheel Bracket (2) and the Wheel Cradle. Then put the Wheel Cradle in the desired position and secure it in place using Rod (11); use Washers (9) and R-Pins (10) to lock the Rod in place.

Step 4: The Wheel Chock and Stand must be secure mounted before using. Plan the location carefully. The mounting surface must be level and solid, designed to support the heavy weight of a motorcycle.

Step 5: There are mounting holes in the bottom of the Stand Base (3). Use these holes as a template to plan where to mount the Stand. Mounting hardware should be inserted into all 4 of the mounting holes on each side of the Stand Base.

Step 6a - For mounting in concrete use a concrete drill bit to drill holes; then attach concrete anchor bolts (not included) to the floor before securing the Stand Base to the concrete. Follow hardware manufacturer's instructions for properly securing concrete anchors in the cement.

Step 6a - For mounting to a truck bed plan the location only after making sure that no electrical wires, gas tanks or other obstacles are in the path of the drilling. Use a steel cutting drill bit to drill the needed holes. Secure the Stand Base to the truck bed with appropriate hardware (not included).

 **Note: If you are not accustomed to doing the tasks mentioned above, the work should be carried out by a qualified service technician.**

1. As stated, the Wheel Cradle (1) can be adjusted to one of the several positions depending on the size of the motorcycle wheel. Find the position that best locks the wheel in place when the wheel is rolled in and the Wheel Bracket pivots up to its closed position.



Note: Loading a motorcycle into a truck bed will require appropriate ramps (not included). The motorcycle must also be secured to the truck bed with straps or belts (not included) after fixing onto the stand.

2. To load the motorcycle into the Wheel Chock, lower the leading edge of the wheel Bracket (2) and slowly push the motorcycle into the Stand. It is recommended that an assistant helps with this task.

3. If the motorcycle is going to be stored in the Wheel Chock for a length of time, it is recommended that additional stability supports are used (straps or belts).

4. To release the motorcycle from the Wheel Chock, first remove any stability supports used, and then with assistance, slowly roll back the motorcycle away from the Wheel Chock.

MAINTENANCE

1. Frequently check the condition of the Motorcycle Wheel Chock and Stand.
2. Ensure all components are in good condition. If the Wheel Chock becomes damaged through accident, or if any weld damage is noted, the product should be replaced.
3. Check to make sure that all hardware is tightly secured in place.
4. Keep the wheel chock clean.

FOR YOUR SAFETY
PLEASE READ THESE INSTRUCTIONS CAREFULLY
AND RETAIN THEM FOR FUTURE USE.



SGS Engineering (UK) Ltd
West Side Park
Raynesway
Derby, DE21 7AZ

EC Declaration of Conformity

This is an important document and should be retained

MANUFACTURER'S NAME: SGS Engineering (UK) Ltd
TYPE OF EQUIPMENT: Motorcycle Wheel Chock
PART NUMBER: SWC200

APPLICATION OF EC COUNCIL DIRECTIVES / STANDARD:

2006/42/EC Machinery Directive

EN 12100:2010

I, the undersigned, hereby declare that the equipment specified above conforms to the above European Communities Directive(s) and Standard(s).

PLACE: Derby, UK

DATE: 20th Dec. 2021

A handwritten signature in black ink, appearing to read 'Robert Wyatt', written over a horizontal line.

(Signature)
Robert Wyatt
Company Secretary

FOR YOUR SAFETY
PLEASE READ THESE INSTRUCTIONS CAREFULLY
AND RETAIN THEM FOR FUTURE USE.

